



## 2 KENDAL

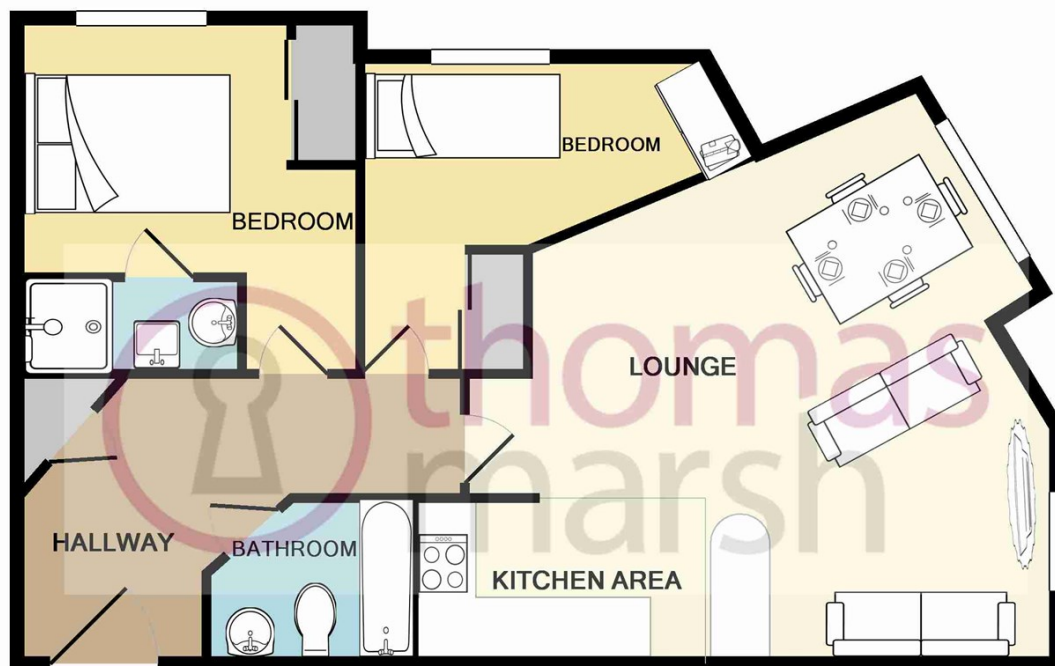
PURFLEET-ON-THAMES, RM19 1LJ

£1,400 PCM

### AVAILABLE NOW!

Thomas Marsh is pleased to present A TWO BEDROOM, GROUND FLOOR APARTMENT situated a 'stone's throw' from PURFLEET C2C STATION, the perfect flat for any COMMUTER. This cosy ground floor STARTER HOME benefits from an OPEN PLAN LIVING AREA, SPACIOUS MASTER BEDROOM with built-in WARDROBE & EN-SUITE, MODERN KITCHEN, and FAMILY BATHROOM with ALLOCATED OFF-STREET PARKING.

**tm**  
thomas marsh



Whilst every attempt has been made to ensure the accuracy of the floor plan contained here, measurements of doors, windows, rooms and any other items are approximate and no responsibility is taken for any error, omission, or mis-statement. This plan is for illustrative purposes only and should be used as such by any prospective purchaser. The services, systems and appliances shown have not been tested and no guarantee as to their operability or efficiency can be given  
Made with Metropix ©2016



Energy Efficiency Rating		
	Current	Potential
Very energy efficient - lower running costs		
(92 plus) A		
(81-91) B		
(69-80) C		79
(55-68) D	67	
(39-54) E		
(21-38) F		
(1-20) G		
Not energy efficient - higher running costs		
<b>England &amp; Wales</b>	EU Directive 2002/91/EC	

Agents Note: Whilst every care has been taken to prepare these particulars, they are for guidance purposes only. All measurements are approximate and are for general guidance purposes only and whilst every care has been taken to ensure their accuracy, they should not be relied upon and potential buyers/tenants are advised to recheck the measurements

Grays Lettings  
47 Orsett Road  
Grays  
Essex  
RM17 5HJ

01375 370779  
lettings@thomas-marsh.com  
www.thomas-marsh.com

**tm**  
thomas marsh